



## Tanque Verde Home Inspections

Tanque Verde Home Inspections offers sewer scopes as part of a property inspection or as a standalone service. We do not sell sewer line repairs, so you can rest assured you will receive an impartial inspection of the sewer line.

A sewer scope is a video inspection of the main sewer line under the building and to the city sewer tap or the septic tank. This involves using a camera head attached to a fiber optic cable connected to a monitor. The camera and cable are pushed through the sewer line using through a ground level cleanout or a roof vent. Our cameras are color and have self-leveling heads, so it is easier for you to understand what you're seeing in the video. The camera head has a built-in transmitter, so we can use an RF receiver to locate major defects.



## SEWER SCOPE

### WHY DO A SEWER SCOPE?

#### ✓ Buying a Property

Sewer line repairs can be some of the most costly repairs to a property. During your inspection period when buying a property having a sewer scope done can identify issues that can cause sewer backups and cost you money. **Important note:** A septic certification does not look at the sewer line under the building or going to the septic tank, so it is still important to do a sewer scope when the property is on septic.

#### ✓ Drainage Issues

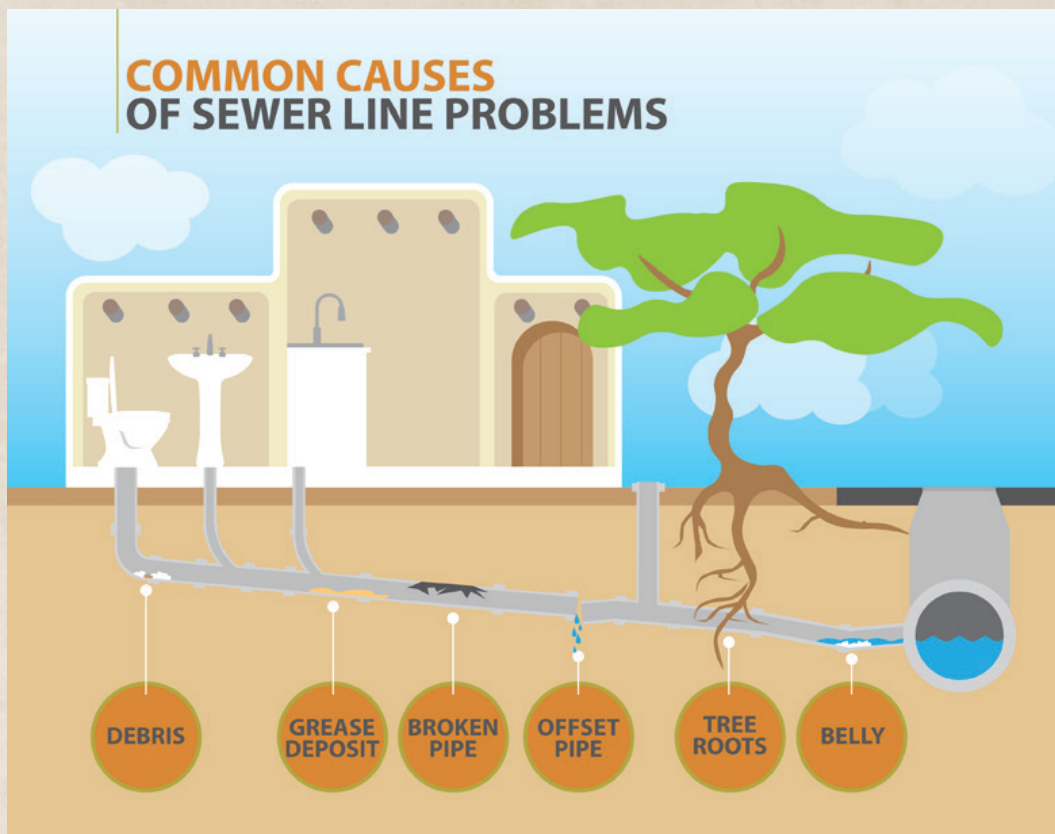
Have you noticed sewer smells, slow draining sinks/tubs, or had a tub or toilet back up? These are all signs of potential sewer line issues.

#### ✓ Line Location

Are you looking to landscape your yard or install a swimming pool? Knowing the location of the sewer line can help you avoid redesigning plans in the future.







## COMMON SEWER LINE ISSUES

**ROOT INFILTRATION:** Roots are one of the most common causes of sewer line blockages. Roots usually will make their way into the sewer line through a pipe connection or through a crack.

**GREASE DEPOSIT:** Pouring cooking grease down drains will eventually restrict the line and cause clogging.

**BROKEN PIPE:** Cracks or breaks in the line enable roots and soil to enter the line, which can cause a back-up, or the break can cause a total failure of the line.

**OFFSET PIPES:** An offset in the pipe can cause debris to accumulate or roots to enter which will cause a back-up.

**LINE SAG OR BELLY:** A sag in the line can cause an accumulation of debris, which will eventually clog the line.

**CORROSION:** Properties built in the 1970's and earlier usually have cast iron pipes under the building. Cast iron pipes have about a 50-year life span. Cast iron will corrode, which the corrosion will catch debris causing a clog. The floor of the cast iron pipe can also erode away eventually leading to line failure or foundation issues.

**To schedule a sewer scope contact us at 520-462-8844 or [info@tvhiaz.com](mailto:info@tvhiaz.com).**

